

- **Style: Simple**
- **Size: Mid Tower supports up to ATX MB**
- **Material: Steel & Tempered Glass**

Main Features

- **Connection** : Front I/O ports with 2 x USB 3.0 & 1 x USB 3.2 (Gen 2) Type C
- **Expansion** : 2+5 drive bays with modular drive trays design
- **Support** : Supports AIO cooling solutions



Specification

Model	Divider 300 TG	Divider 300 TG Snow
P/N	CA-1S2-00M1WN-00	CA-1S2-00M6WN-00
Case Type	Mid Tower	
Chassis Dimension (H*W*D)	475 x 220 x 461 mm (18.7 x 8.66 x 18.1 inch)	
Net Weight	7.85 kg / 17.3 lbs.	
Side Panel	Tempered Glass x 2	
Color	Black	White
Material	SPCC	
Cooling System	Rear(exhaust): 120 x 120 x 25 mm fan (1200rpm, 22 dBA) x 1	
Drive Bays	2 x 3.5", 5 x 2.5" or 7 x 2.5"	
Expansion Slots	7 (Rotatable Patented Design)	
Motherboards	6.7" x 6.7" (Mini ITX), 9.6" x 9.6" (Micro ATX), 12" x 9.6" (ATX)	
I/O Port	USB 3.2 (Gen 2) Type-C x 1, USB 3.0 x 2, HD Audio x 1	
PSU	Standard PS2 PSU (optional)	
Fan Support	Front: 3 x 120mm, 2 x 120mm, 1 x 120mm 2 x 140mm, 1 x 140mm Top: 1 x 120mm, 1 x 140mm Right (M/B Side): 2 x 120mm, 1 x 120mm Rear: 1 x 120mm	
Radiator Support	Front: 1 x 360mm, 1 x 240mm, 1 x 120mm 1 x 280mm, 1 x 140mm Right (M/B Side): 1 x 240mm (vertical-installed GPU recommended), 1 x 120mm Rear: 1 x 120mm	
Clearance	CPU cooler max height: 145mm VGA max length: 360mm(With radiator) 390mm(Without radiator) PSU max length: 180mm (With HDD Cage) 220mm(Without HDD Cage)	

Packaging

Package Information	Divider 300 TG	Divider 300 TG Snow
EAN Code	4713227526616	4713227527583
UPC Code	841163076620	841163077597
N.W	7.85 kg / 17.3 lbs.	
G.W	9.3 kg / 20.5 lbs.	
Carton Size (L x W x H)	557 x 317 x 545 mm / 21.9 x 12.5 x 21.5 inch	
Cuft	3.4	
Container	w/o pallet	
20'	283 pcs	
40'	591 pcs	
40' HQ	671 pcs	



Appearance –
Black version



Angle view



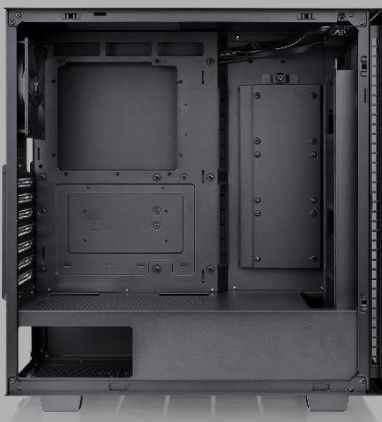
Left Side view



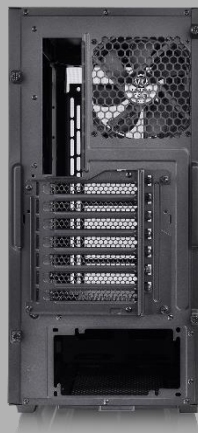
Front view



Right Side view



Internal Structure



Rear view



Top view



Bottom view

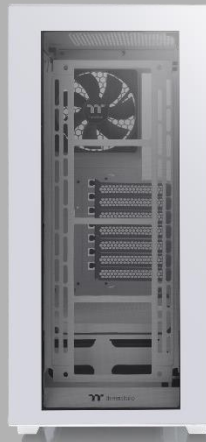
Appearance –
Snow version



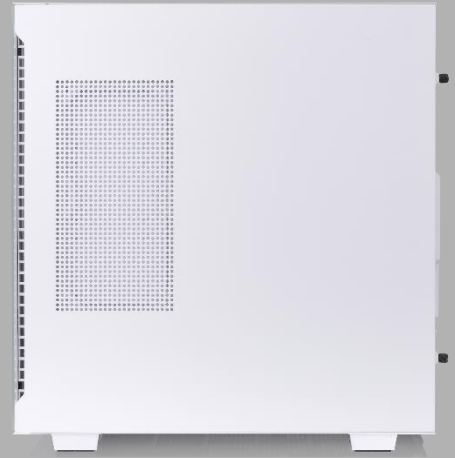
Angle view



Left Side view



Front view



Right Side view



Internal Structure



Rear view



Top view



Bottom view



Thermaltake Divider 300 TG Mid Tower Chassis



The brand new ***Divider Series***

Clearance



Maximum support up to 120mm fan x 7

Maximum radiator support up to 360mm at front



3mm Tempered Glass Window x 2



Thermaltake Divider 300 TG Mid Tower Chassis

Unique Design



Unique Side Panel Design-
triangular Tempered Glass/Steel
side panels for left side panel

Structure (External)



USB 3.2 (Gen 2) Type-C x 1

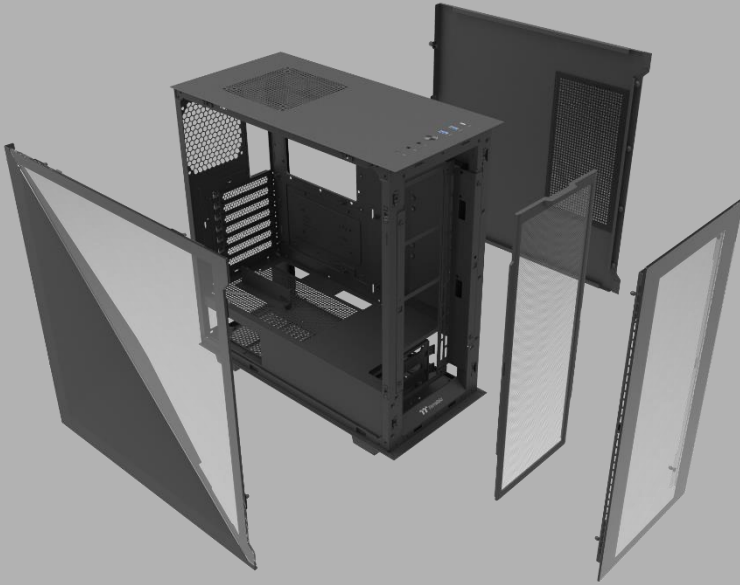
USB 3.0 x 2

HD Audio

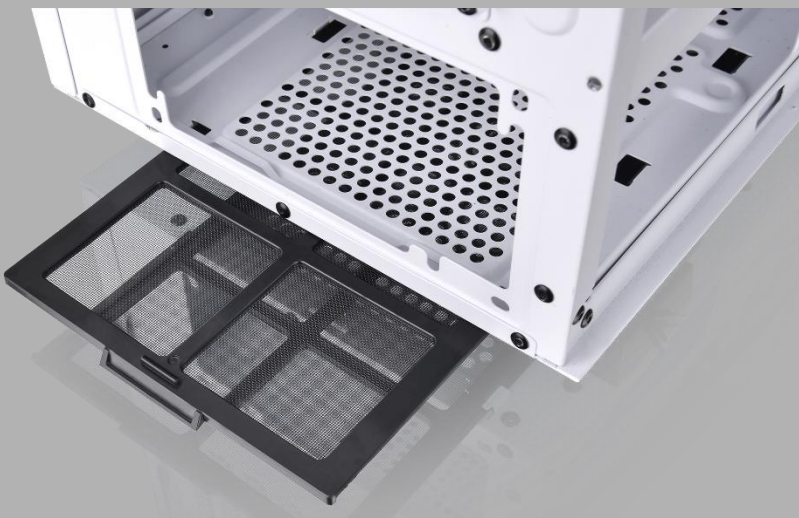


The gap between
triangular TG and steel
panels are designed for
better air-flow

Structure (External)

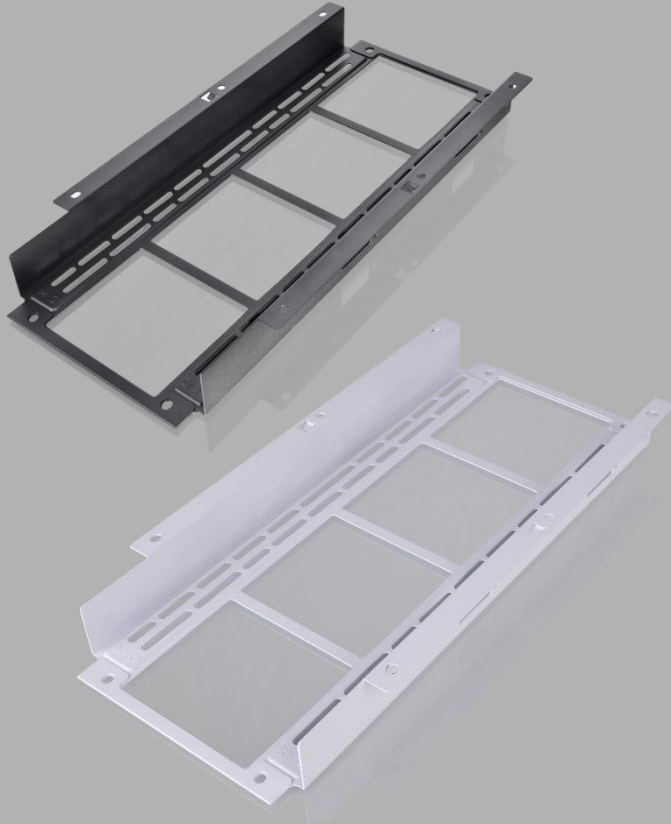


Tool-free,
easy-to-remove
Panels design

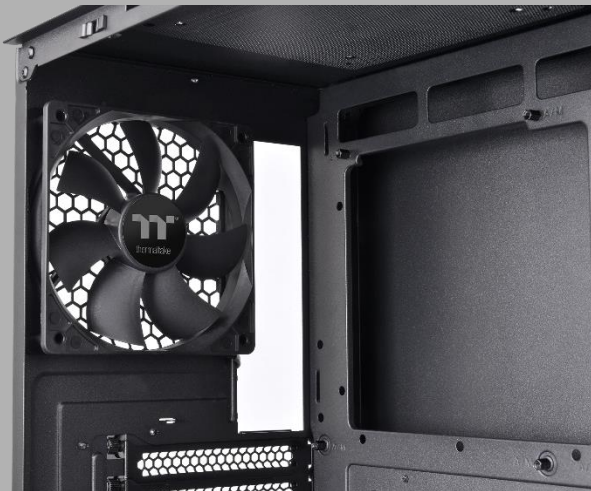


Bottom filter

Structure (Internal)



Removable front fan/radiator bracket for easy installation



Preinstalled 120mm rear turbo fan

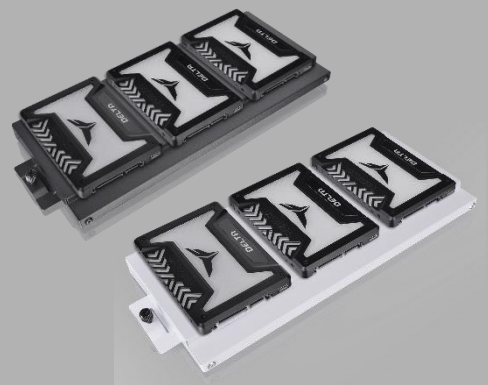
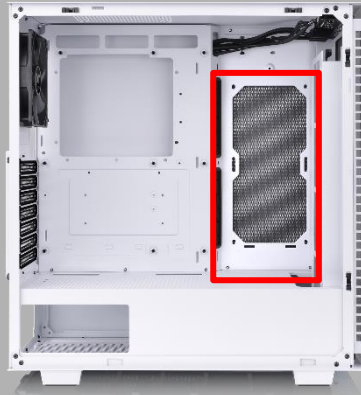
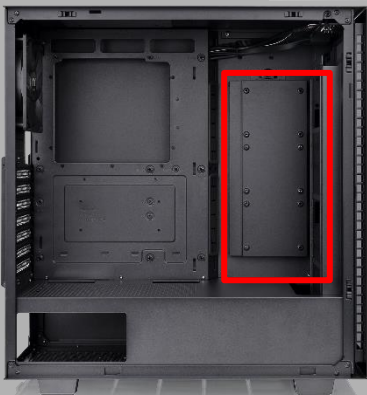
Structure (Internal)



Full length power cover



Cable cover design for cleaner internal look



It can support up to 3 2.5" SSD

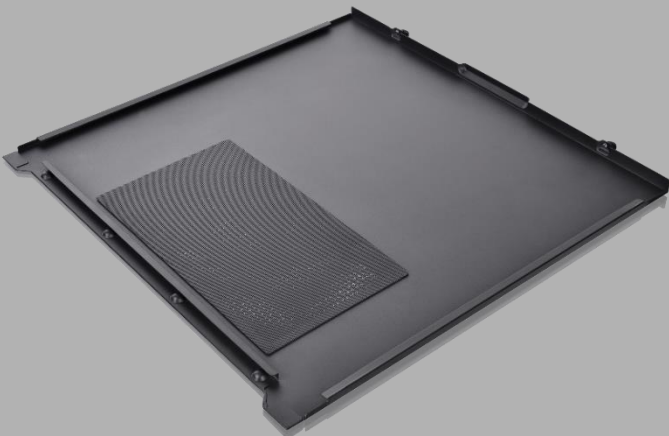
Structure (Internal)



Front filter



Top filter



Left side filter

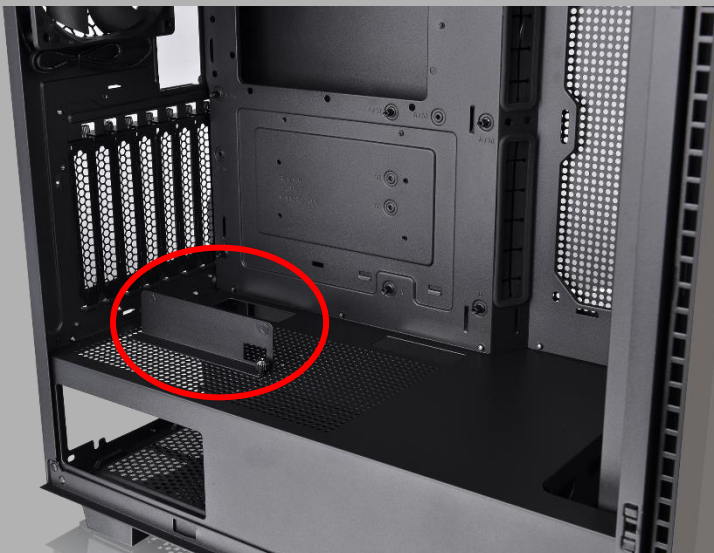
Rotational VGA bracket design



Horizontal VGA bracket



Vertical VGA Bracket

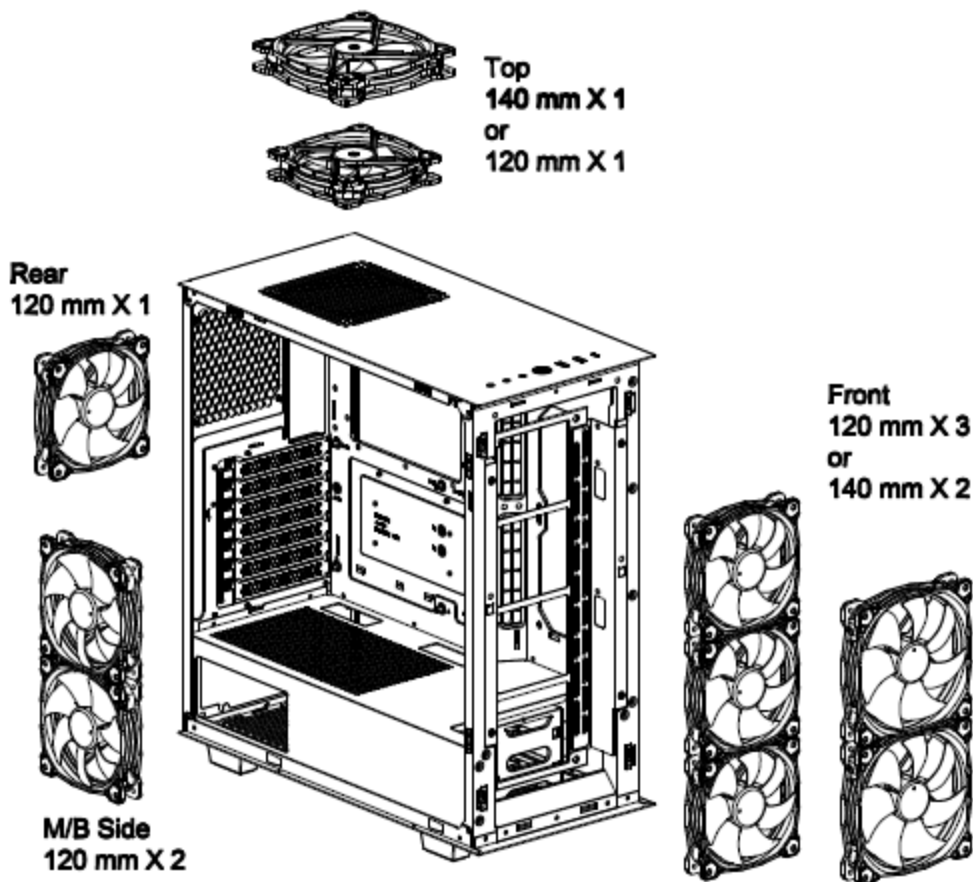


VGA Bracket in accessory box supports vertical VGA installation

Compatibility List

Fan Compatibility List			
	120mm	140mm	200mm
Front	3	2	-
Top	1	1	-
Rear	1	-	-
Right	2	-	-

Air Cooling Installation

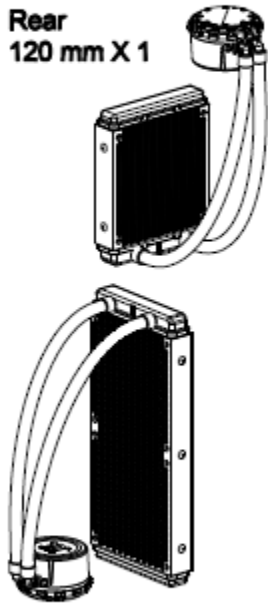


All-in-One Compatibility

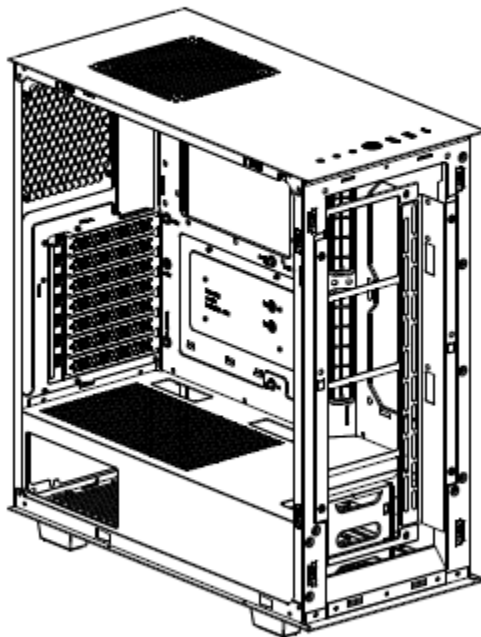
All-in-One Compatibility List						
	120mm	240mm	360mm	140mm	280mm	420mm
Front	●	●	●	●	●	-
Right	●	●	-	-	-	-
Rear	●	-	-	-	-	-
Bottom	-	-	-	-	-	-

AIO Liquid Cooling Installation

Rear
120 mm X 1



M/B Side
240 mm X 1



Front
360 mm X 1
or
280 mm X 1

