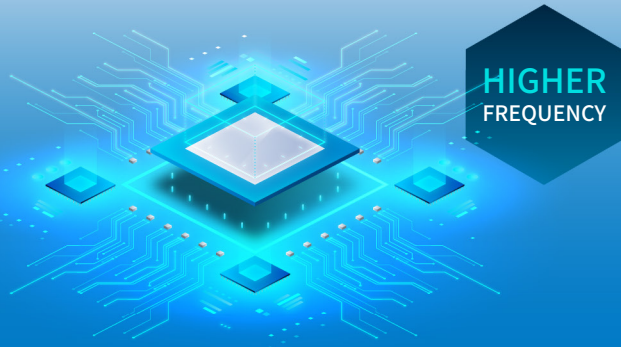




## Harness The Power Of DDR5

Taking speed, capacity, and reliability even further, the cutting-edge technology of this DDR5 module gives that next-level edge for your system's performance. With an aggressive 5600MT/s frequency, it's 75% higher than a standard 3200MT/s DDR4 to provide multi-core CPUs with extreme responsiveness and the power to multi-task seamlessly.



HIGHER  
FREQUENCY

## Greater Power Efficiency

Even with all of its extra power, this DDR5 module improves upon its predecessor with on-module voltage regulation. A power management integrated circuit (PMIC) reduces the burden on the motherboard control and results in a lower voltage of 1.1V versus 1.2V for DDR4 for even less power consumption.



LOWER  
VOLTAGE  
1.1V

UDIMM/SODIMM DDR5 - 5600MT/s

# NEXT-LEVEL EDGE

For Your System

### Features

- 5600MT/s grants faster transmission speeds and higher bandwidth than DDR4
- Low voltage of 1.1V for less power consumption
- Improved reliability versus DDR4 with On-Die Error Correction Code (ECC)
- Optimized efficiency with two independent 32-bit channels per module
- High computing performance with double the banks and double the burst length compared to DDR4
- Compatible with 13th Gen Intel® Core™ processors that support DDR5 and DDR5 compatible motherboards

### Specifications

- Dimensions:  
【UDIMM】 31.3mm x 133.4mm / 【SODIMM】 30.0mm x 69.6mm
- Capacity:  
Single Pack: 8GB, 16GB, 24GB, 32GB, 48GB  
Dual Channel Kit: 16GB(8GB\*2), 32GB(16GB\*2), 48GB(24GB\*2), 64GB(32GB\*2), 96(48GB\*2)
- Form Factor:  
【UDIMM】 288 Pin UDIMM / 【SODIMM】 262 Pin SOIMM
- Frequency (Speed): 4800MT/s, 5200MT/s, 5600MT/s
- CAS Latency: CL40, CL42, CL46
- Voltage: 1.1V
- Certification: CE, UKCA, Green dot (Germany & Spain Only), WEEE, Triman, RoHS
- Warranty: Limited Lifetime Warranty

\*Actual speed may vary depending on system platform or configuration

# DDR5 Part Number

## DDR5 - 4800 | UDIMM

Capacity	CAS Latency / Voltage	IC Configuration	Rank	P/N
8GB x 1	CL40, 1.1V	1Gx16	Single Rank	SP008GBLVU480G02
8GB x 2	CL40, 1.1V	1Gx16	Single Rank	SP016GBLVU480G22
16GB x 1	CL40, 1.1V	2Gx8	Single Rank	SP016GBLVU480F02
16GB x 2	CL40, 1.1V	2Gx8	Single Rank	SP032GBLVU480F22
32GB x 1	CL40, 1.1V	2Gx8	Dual Rank	SP032GBLVU480F02
32GB x 2	CL40, 1.1V	2Gx8	Dual Rank	SP064GBLVU480F22

## DDR5 - 4800 | SODIMM

Capacity	CAS Latency / Voltage	IC Configuration	Rank	P/N
8GB x 1	CL40, 1.1V	1Gx16	Single Rank	SP008GBSVU480G02
8GB x 2	CL40, 1.1V	1Gx16	Single Rank	SP016GBSVU480G22
16GB x 1	CL40, 1.1V	2Gx8	Single Rank	SP016GBSVU480F02
16GB x 2	CL40, 1.1V	2Gx8	Single Rank	SP032GBSVU480F22
32GB x 1	CL40, 1.1V	2Gx8	Dual Rank	SP032GBSVU480F02
32GB x 2	CL40, 1.1V	2Gx8	Dual Rank	SP064GBSVU480F22

## DDR5 - 5200 | UDIMM

Capacity	CAS Latency / Voltage	IC Configuration	Rank	P/N
16GB x 1	CL42, 1.1V	2Gx8	Single Rank	SP016GBLVU520F02
16GB x 2	CL42, 1.1V	2Gx8	Single Rank	SP032GBLVU520F22
24GB x 1	CL42, 1.1V	3Gx8	Single Rank	SP024GBLVU520P02
24GB x 2	CL42, 1.1V	3Gx8	Single Rank	SP048GBLVU520P22
32GB x 1	CL42, 1.1V	2Gx8	Dual Rank	SP032GBLVU520F02
32GB x 2	CL42, 1.1V	2Gx8	Dual Rank	SP064GBLVU520F22
48GB x 1	CL42, 1.1V	3Gx8	Dual Rank	SP048GBLVU520P02
48GB x 2	CL42, 1.1V	3Gx8	Dual Rank	SP096GBLVU520P22

## DDR5 - 5200 | SODIMM

Capacity	CAS Latency / Voltage	IC Configuration	Rank	P/N
16GB x 1	CL42, 1.1V	2Gx8	Single Rank	SP016GBSVU520F02
16GB x 2	CL42, 1.1V	2Gx8	Single Rank	SP032GBSVU520F22
32GB x 1	CL42, 1.1V	2Gx8	Dual Rank	SP032GBSVU520F02
32GB x 2	CL42, 1.1V	2Gx8	Dual Rank	SP064GBSVU520F22

## DDR5 - 5600 | UDIMM

Capacity	CAS Latency / Voltage	IC Configuration	Rank	P/N
16GB x 1	CL46, 1.1V	2Gx8	Single Rank	SP016GBLVU560F02
16GB x 2	CL46, 1.1V	2Gx8	Single Rank	SP032GBLVU560F22
24GB x 1	CL46, 1.1V	3Gx8	Single Rank	SP024GBLVU560P02
24GB x 2	CL46, 1.1V	3Gx8	Single Rank	SP048GBLVU560P22
32GB x 1	CL46, 1.1V	2Gx8	Dual Rank	SP032GBLVU560F02
32GB x 2	CL46, 1.1V	2Gx8	Dual Rank	SP064GBLVU560F22
48GB x 1	CL46, 1.1V	3Gx8	Dual Rank	SP048GBLVU560P02
48GB x 2	CL46, 1.1V	3Gx8	Dual Rank	SP096GBLVU560P22

## DDR5 - 5600 | SODIMM

Capacity	CAS Latency / Voltage	IC Configuration	Rank	P/N
16GB x 1	CL46, 1.1V	2Gx8	Single Rank	SP016GBSVU560F02
16GB x 2	CL46, 1.1V	2Gx8	Single Rank	SP032GBSVU560F22
32GB x 1	CL46, 1.1V	2Gx8	Dual Rank	SP032GBSVU560F02
32GB x 2	CL46, 1.1V	2Gx8	Dual Rank	SP064GBSVU560F22