

Z1 Pro (Gen 3)

Desk Mount Monitor Arm with SuperSpeed USB Hub



General Specifications

Supported Screen Size	≤ 34" / ≤ 38" Ultrawide Monitor
VESA Standard	VESA 75 (75x75) VESA 100 (100x100)
Maximum Monitor Weight	15 kg 33 lbs
Rotation	360°
Swivel	180°
Tilt	+/-15°
Material	Steel, Aluminum Alloy ADC12
Weight	2.9 kg
Colour	Matt Black
Tabletop Thickness*	20 to 65 mm

*For desks using a Honeycomb-structure or Sandwich-structure with hollow pockets, we recommend adding a stiffening board to prevent clamp damage on the tabletop.

Shipping Information

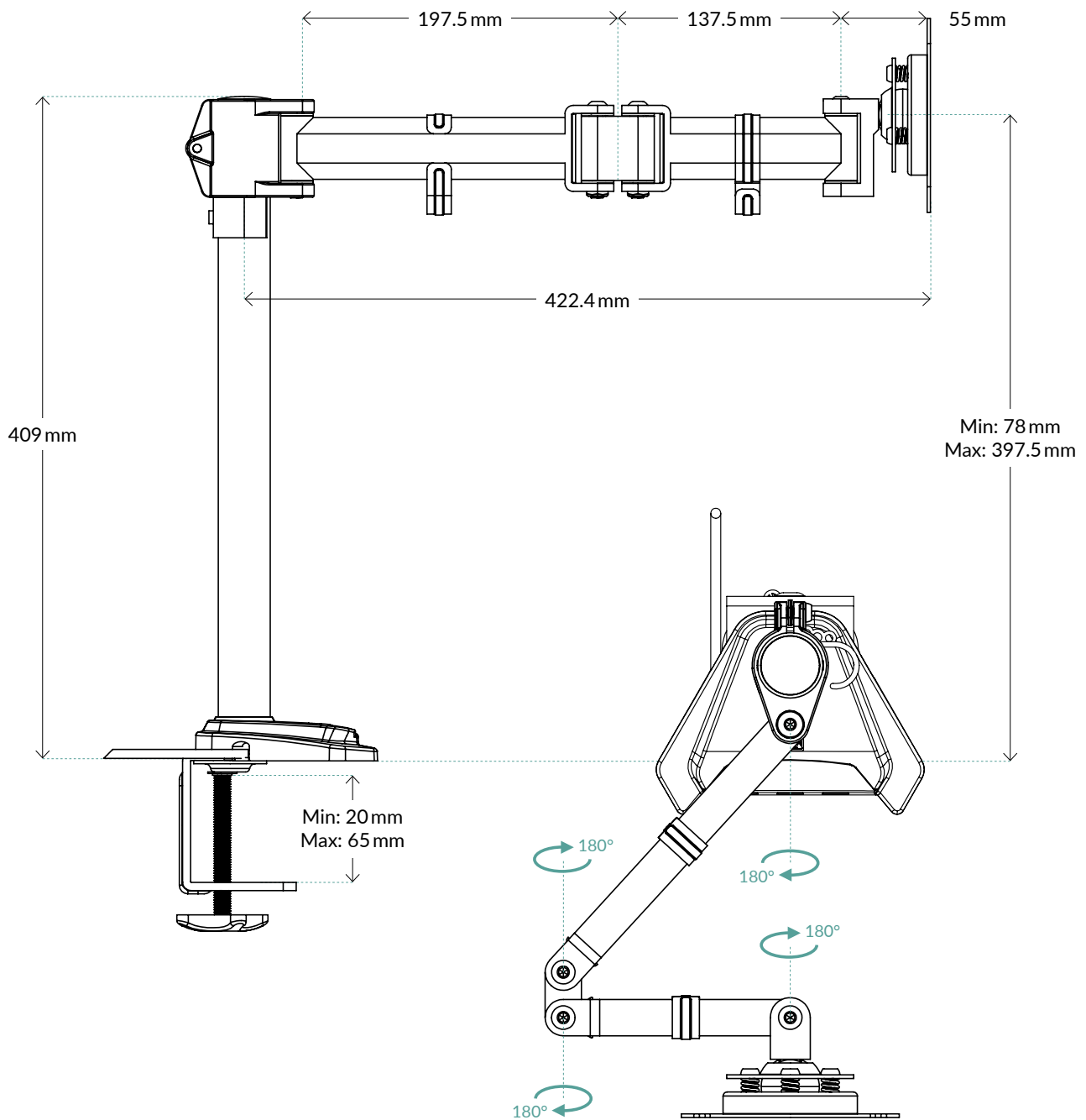
Box Dimensions	426 (L) x 140 (W) x 130 (H) mm
Gross Weight	2450 g
SKU	AEMNT00049A
EAN	4895213701754
UPC	872767009684
Package Content	Z1 Pro (Gen3) x1 Installation Kit x1

USB Hub

Ports	4x USB 3.2 Gen 1, 1x DC Power Jack Input
Power Output	Without Power Supply: 5 V DC 900 mA Port, Max. 900 mA With Power Supply: 5 V DC 900 mA Port, Max. 2900 mA
Compatibility	Windows, macOS, Linux
Cable Length	2 m

Z1 Pro (Gen 3)

Desk Mount Monitor Arm with SuperSpeed USB Hub



All materials are compatible with RoHS requirements.

MORE INFORMATION



MANUALS

