



AN SFX REVOLUTION



The V SFX Platinum delivers the high quality you've come to expect from the V series now in an SFX form factor featuring 80 Plus Platinum efficiency, fully modular cables, a 92mm fan, 16AWG PCIe high-efficiency cables, a 12VHPWR connector compatible with 40 series GPUs, and a 10-year warranty.

The V SFX Platinum is the most power dense SFX PSU currently on the market and the first to achieve 1100W by using advanced component miniaturization and enhanced thermal technology. This means you can build a compact mini-ITX machine without losing any wattage. Additionally, an included bracket makes the V SFX Platinum compatible with a build of any size. Revolutionize your build with the V SFX Platinum.

V SFX PLATINUM 1100

Compact SFX form factor: The ultra-compact dimensions of this SFX unit make it the perfect fit for a mini-ITX build.

High power density: With 30% greater power density than the V SFX Gold 850W, this is one of the highest power densities in the industry.

Mini but mighty: Advanced manufacturing processes and component miniaturization technology keep this unit mini but mighty.

Advanced thermal technology: An integrated transformer, rectifier, and full-bridge LLC provide advanced heat dissipation.

ATX 3.0 support & a durable 12VHPWR cable: Includes ATX 3.0 support and a 90-degree 12+4pin (12VHPWR) PCIe 5.0 cable featuring lower temperatures, enhanced durability, and improved safety.



PCIe 5.0
12VHPWR

Flexible compatibility: An included bracket ensures compatibility with both ITX and ATX cases.

80 Plus Platinum efficiency certification: This unit is certified to achieve more than 92% efficiency at typical loads.

Fully modular cabling: Efficiently reduces clutter, increases airflow, and improves overall efficiency and thermal performance.

High-quality Japanese capacitors: High-quality Japanese capacitors feature reduced ripple noise and enhanced reliability.

10-year warranty: This unit comes with a standard limited manufacturing warranty of 10 years from the date of purchase.

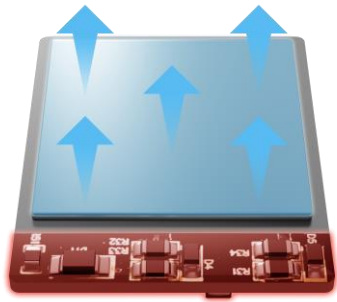


FEATURE HIGHLIGHTS



Compact SFX form factor

The ultra-compact dimensions of this SFX unit make it the perfect fit for a mini-ITX build.



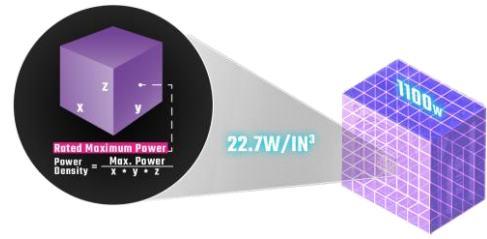
Advanced thermal technology

An integrated transformer, rectifier, and full-bridge LLC provide advanced heat dissipation.



80 Plus Platinum efficiency certification

This unit is certified to achieve more than 92% efficiency at typical loads.



High power density

With 30% greater power density than the V SFX Gold 850W, this is one of the highest power densities in the industry.



Flexible compatibility

An included bracket ensures compatibility with both ITX and ATX cases.



A durable 12VHPWR cable

An advanced thermal structure and flexible cable provide improved safety.

FEATURE HIGHLIGHTS

Mini but mighty

With advanced manufacturing processes and internal innovations such as flat copper wiring on the DC-DC converter choke, flat copper piling on the transformer, and an aluminum plate full-bridge LLC structure, the V SFX Platinum effectively achieves component miniaturization.

Low thermal impedance cooling

A full-bridge LLC MOSFET actively removes heat and reduces thermal pad demands while maintaining miniaturization with a one-piece integrated structure.

EMI-inhibiting materials

Amorphous metal materials suppress electronic interference and improve performance.

High-quality Japanese capacitors

Large, high-quality Japanese capacitors increase efficiency and reduce ripple noise.

Main transformer

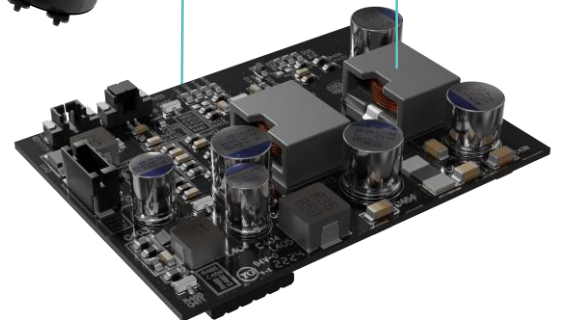
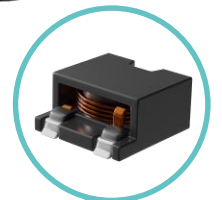
Flat copper piling effectively miniaturizes the transformer.

Synchronous rectifier

The transformer and rectifier are miniaturized into one integrated structure.

DC-DC converter

Flat copper wiring on the DC-DC converter choke further contributes to component miniaturization.



SPECIFICATIONS

Product Name	V SFX Platinum 1100	
Item Code	MPZ-B001-SFAP-B	
ATX Version	ATX 3.0 & SFX 12V Ver. 3.42	
PFC	Active PFC	
Input Voltage	100 - 240V	
Input Current	14 - 6.5A	
Input Frequency	50 - 60Hz	
Dimensions (L x W x H)	100 x 125 x 63.5mm	
Fan Size	92mm	
Fan Bearing	FDB	
Efficiency	≥ 92% @ Typical Load	
80 PLUS Rating	80 PLUS Platinum	
ErP 2014 Lot 3	Yes	
Operating Temperature	0 ~ 50°C	
Power Good Signal	100 - 150ms	
Hold Up Time	≥ 16ms at 70% Load	
MTBF	>100,000 hours	
Protections	OVP / OPP / SCP / OCP / UVP / OTP / Surge & Inrush Protection	
Regulatory	TUV, cTUVus, CE, FCC, BSMI, CCC, EAC, UKCA	
Connectors	ATX 24 Pin	x1 = 1x (300mm)
	EPS 4+4 Pin	x1 = 1x (450mm)
	EPS 8 Pin	x1 = 1x (450mm)
	SATA	X8 = 2x (100+150+150+150mm)
	Peripheral 4 Pin	x4 = 1x (100+120+120+120mm)
	PCI-e 6+2 Pin	x3 = 3x (400mm)
	12VHPWR	x1 = 1x (400mm)

AC INPUT	100-240V~ 14 - 6.5A 50 - 60Hz				
DC OUTPUT	+3.3V	+5V	+12V	-12V	+5Vstb
	20A	20A	91.6A	0.3A	3A
TOTAL POWER	120W		1099.2W	3.6W	15W
	1100W				

PACKING INFORMATION

Cable Type	EAN	UPC
US	4719512122655	884102094972
UK	4719512122662	884102094989
EU	4719512122679	884102094996
AU	4719512122693	884102095016
KR	4719512122716	884102095030
JP	4719512122730	884102095054
WO	4719512122754	884102095078

Net Weight	1.946 kg / 4.29 lb
Gross Weight	2.275 kg / 5.016 lb
Package Dimensions	272 x 197 x 100mm (10.71 x 7.76 x 3.94")
Carton Dimensions	525 x 290 x 235mm (20.67 x 11.42 x 9.25")
Unit / Carton	5 pcs
Carton / Pallet	32 pcs

